

NRR

19,500 LBS. GVWR
CLASS 5



STANDARD CAB / **CREW CAB**
SEATING FOR UP TO 3 / SEATING FOR UP TO 7



5.2L I4 TURBOCHARGED
215 HP @ 2,500 RPM
452 LB-FT @ 1,850 RPM



BODY PAYLOAD



25,500 lbs. GCWR
TRUCK WEIGHT & TRAILER WEIGHT

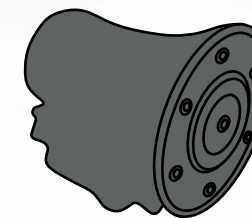
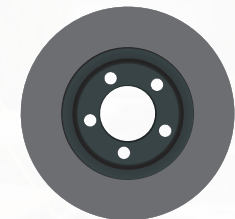
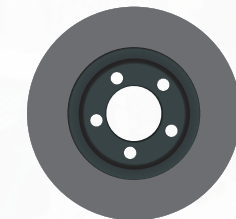


30-GAL. IN-FRAME
FUEL TANK

VACUUM/HYDRAULIC
WITH 4-CHANNEL ABS

Front Disc
14.3 in.

Rear Disc
13.7 in



6-SPEED AUTOMATIC
TRANSMISSION



225/70R19.5F (12-pr)
TIRES